


SKY SEAL INSULATION

INSULATE TODAY, SAVE TOMORROW

 +971 56 945 7168

 info@skysealinsulation.com

 www.skysealinsulation.com

 Abu Dhabi, Al-Ain, Dubai, Sharjah

Table Of Contents

- 01** Company Overview (AboutUs)
- 02** Why Choose Sky Seal Insulation?
- 03** A Message by Managing Director
- 04** Our Mission & Vision
- 05** Health & Safety
- 06** Our Commitment: Quality & Safety
- 07** Our Core Services Our 25-Year Warranty
 - * SprayPolyurethaneFoam (SPF)Roofing
 - * Advanced Waterproofing Systems
- 08** WATERPROOFING SOLUTIONS
 - Epoxy Coating
 - Membrane Waterproofing
 - Cementitious Waterproofing
 - GRP LINING Roof
- 09** Our Process
- 10** Contact us

About Us

Sky Seal Insulation:

Sky Seal Insulation is a trusted provider of premium roof insulation and waterproofing solutions across the UAE. With a highly skilled team and advanced application techniques, we deliver long-lasting protection built for the extreme Sky Seal climate.

From villas and warehouses to commercial buildings, we ensure superior energy efficiency, durability, and leak-free performance for every project.

Best Regards,
Sky Seal Insulation



Why Choose Us?

25-Year
Warranty

Unmatched long-term guarantee on waterproofing works.

Proven UAE
Expertise

In-depth knowledge of local climate challenges and regulations.

Quality
Craftsmanship

Meticulous attention to detail and a commitment to excellence.

Zero-Accident

Rigorous protocols ensuring protection for all.

Safety Record

Systems designed to significantly reduce energy consumption and costs.

Trusted Partner

A proven track record of success with major clients across the Emirates.

A Message by
Managing Director

Welcome Message

At Sky Seal Insulation, we take pride in delivering advanced waterproofing, insulation, and flooring solutions engineered for the unique climate and construction requirements of the UAE. Our commitment to quality, safety, and sustainability ensures long-lasting protection and enhanced energy efficiency for every project.

Whether it's a villa, commercial building, or large industrial facility, our expert team is dedicated to safeguarding your assets and helping you build a stronger, more efficient future.

Thank you for trusting us with your projects. We look forward to serving you with excellence and commitment.



VISION & MISSION

Our Vision

To be the UAE's most trusted and premier provider of innovative building envelope solutions Embrace diversity as an essential component in the way we do business. Develop enthusiastically satisfied customers all the time and treat each customer with equal respect.

Our Mission

Our mission is to provide reliable, high-quality insulation and waterproofing services that protect properties, reduce energy consumption, and enhance comfort for homes and businesses across the UAE. We are committed to excellence, safety, and delivering results that stand the test of time.

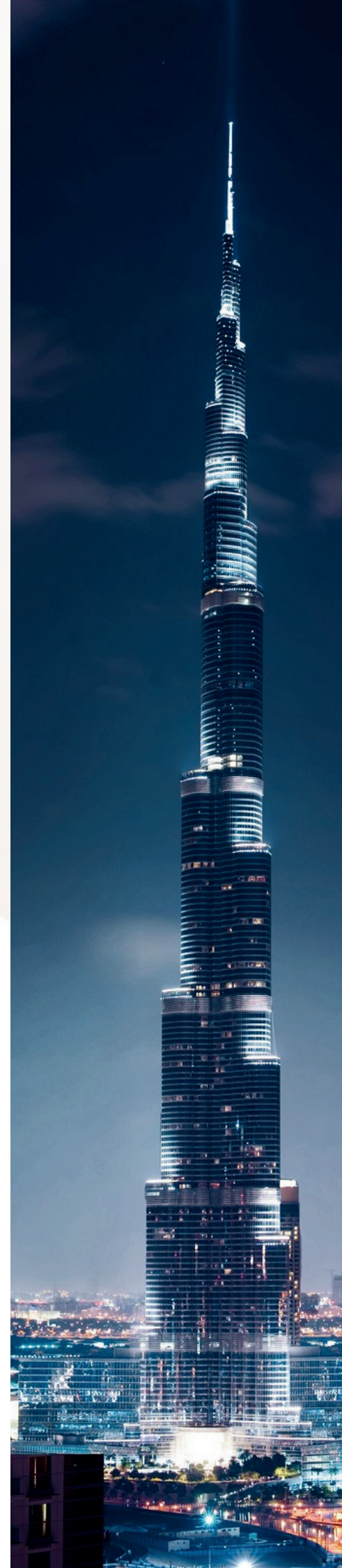
Quality Policy

At Sky Seal Insulation, we are committed to delivering high-quality waterproofing, insulation, and flooring solutions that consistently meet and exceed customer expectations. Our objective is to ensure long-lasting performance, safety, and reliability in every project we undertake.

We achieve this through:

- Strict adherence to UAE standards and best practices
 - Continuous improvement of our processes, materials, and workmanship
 - Ongoing training and development of our team
- Strong focus on customer satisfaction and timely project delivery

Sky Seal Insulation is dedicated to maintaining a culture of excellence, innovation, and accountability, ensuring that every project reflects our commitment to superior quality and long-term value.



HEALTH & SAFETY POLICY

At Sky Seal Insulation, we are committed to providing a safe and healthy working environment for our employees, clients, and partners. We prioritize accident prevention, safe work practices, and strict compliance with UAE safety standards. Our goal is to minimize risks, protect our workforce, and ensure every project is carried out responsibly.

Safety is at the core of everything we do.

- Ensure all staff are trained and equipped with the proper safety procedures and PPE.
- Identify, assess, and control hazards through regular inspections and risk assessments.
- Maintain safe handling and application of materials used in insulation, waterproofing, and epoxy flooring.
- Promote a safety-first culture where all incidents are reported, reviewed, and prevented.



Sky Seal Insulation hereby warrants its work against leakage caused by faulty materials and/or faulty workmanship in the project specified below for a period of twenty five (25) years from the date of project completion. Should the system fail to perform as intended, Sky Seal Insulation agrees to carry out all necessary remedial work at no additional cost to the client/contractor under this warranty. This warranty is limited to the supply and application of materials only and does not cover damages resulting from natural calamities, structural defects, or external factors beyond our control.

Project :

Client Name:

Consultant :

Contractor :

Roof WaterProof Req :

Date of Issue:



Authorized Signatory

Sky Seal Insulation

Abu Dhabi, U.A.E.

Mobile No.: +971 56 945 7168

Our **Specialized** Services

COMBO ROOF SYSTEM

At Sky Seal Insulation, we offer the Combo Roof System—an advanced solution that integrates both waterproofing and thermal insulation into one seamless, high-performance application. This system provides superior protection against water leakage, minimizes heat transfer, and significantly enhances the building's overall energy efficiency. With long-lasting durability and low maintenance requirements, our Combo Roof System delivers consistent and reliable performance. Backed by a 10-year warranty, it reflects our dedication to quality, sustainability, and long-term value for our clients.

Application Process

- **Polyurethane Foam Spray:** Applied at 3 to 8cm thickness with a thermal value of 0.36 W/m²K, vertical upstand up to 250 mm.
 - **Rubberized Liquid Coat:** Applied over the PU foam to provide a seamless waterproofing layer.
 - **Geotextile Layer:** 120 gsm filter fabric placed for reinforcement and membrane protection.
 - **Flexible Boards & Expansion Joints:** Installed in 3×3 m panels to accommodate thermal movement.
 - **Cementitious Protection Screed:** Ready-mix screed applied to protect the waterproofing system from mechanical damage.
- Polysulphide Sealant:** Used in grooves to create flexible, watertight joints.
- Angle Fillet & Fabric Reinforcement:** 150×150 mm skirting with acrylic coating for strengthened corner waterproofing.
- Final Acrylic Coating:** Applied at 900–1100 microns to provide UV resistance.

Step 1: Surface Cleaning



Step 2: Apply Polyurethane Form Spray



Step 3: Application of Rubberized Coating



Step 4: Water Test by **Main Contractor**



Step 5: Spreading of **Geotextiles** & Preparation of **Ridges**



Step 6: Application of Ready **Mix Screed** & **Screed Leveler**



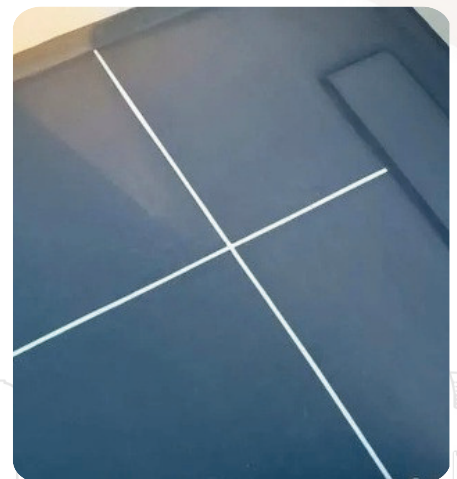
Step 7: Making Groove and Preparation of **Roof Slab** with Mortar



Step 8: Sealant Filling



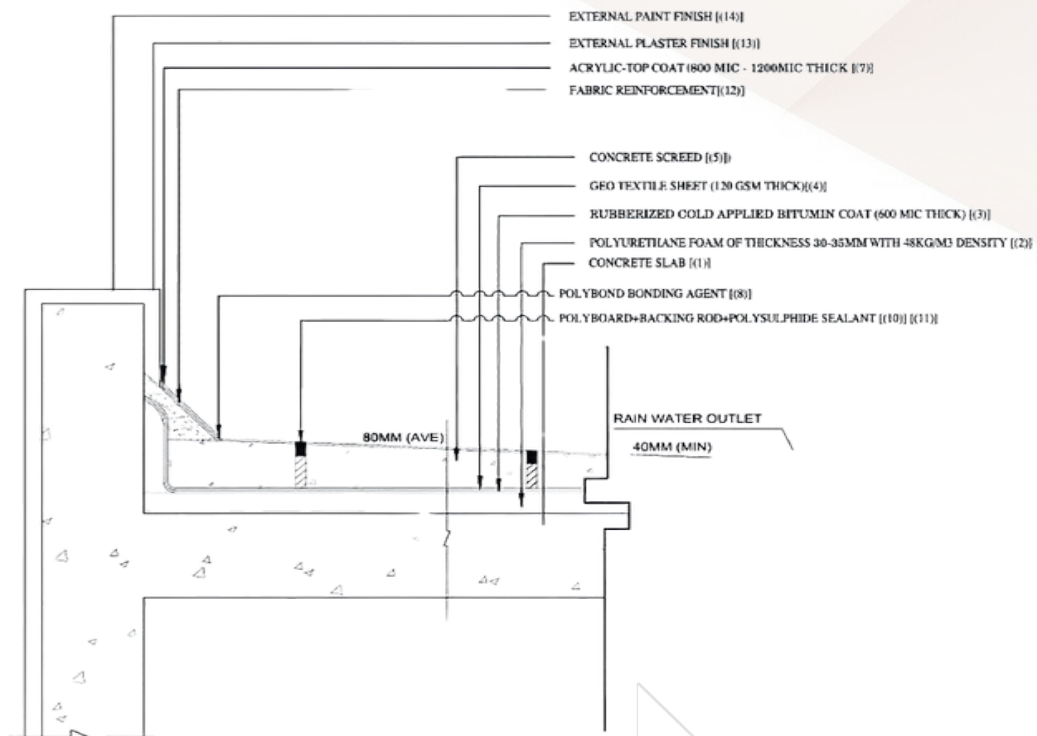
Step 9: Application of **Acrylic Coating** Final Coat



TECHNICAL DETAILS

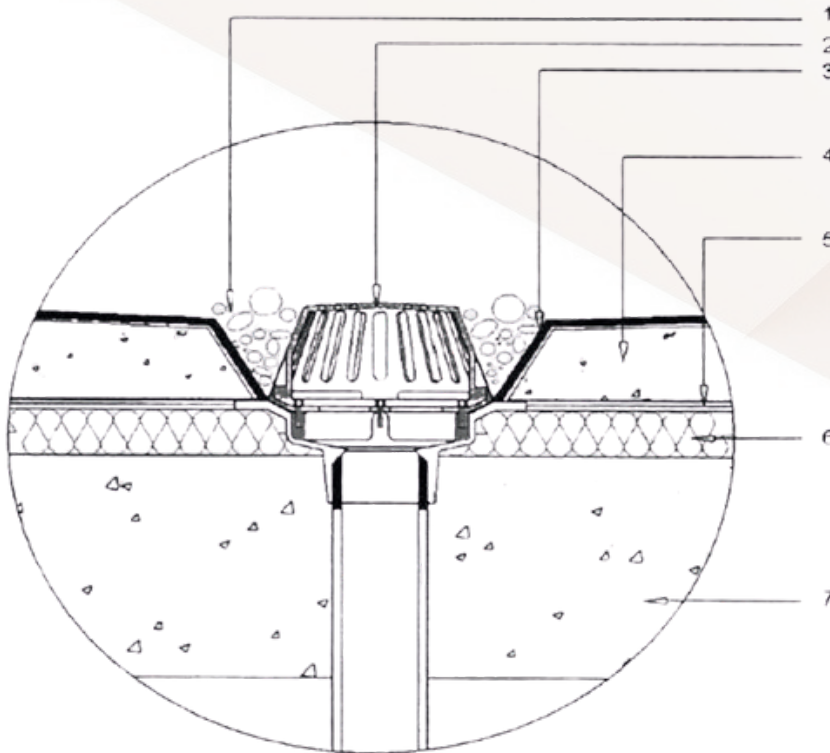
SECTIONAL DRAWING OF **COMBO** **ROOF SYSTEM**

- 1.External Plaster Finish
- 2.Fabric Reinforcement
- 3.Angle Fillet applied over Polybond Bonding Agent (varies according to slope)
- 4.Polyflex Top Coat (800 microns thick) – Acrylic, polymer-modified
- 5.SBR Bonding Agent
- 6.Concrete Screed to Slope (320 OPC, 90 mm thick)
- 7.Filter Membrane – Geotextile
- 8.Rubberized Coating
- 9.Polyurethane Foam (30–35 mm thickness, 40–45 kg/m³ density)
- 10.Polybond Bonding Agent
- 11.Polybord + Backing Rod + Polyseal 1 PU Sealant



SECTIONAL DRAWING OF **COMBO ROOF** RAIN WATER OUTLET **TERMINATION** DETAIL

- 1.Gravel Layer
- 2.Rainwater Outlet
- 3.Poly Flex – Flexible cementitious waterproofing coating
- 4.Reinforced Concrete Screed to Slope
- 5.Brush-Applied Polytex / RBE Elastomeric UV Protection Coating
- 6.Sprayed Polyurethane Foam Insulation / ITE Interface Concrete
- 7.Reinforced Concrete Layer



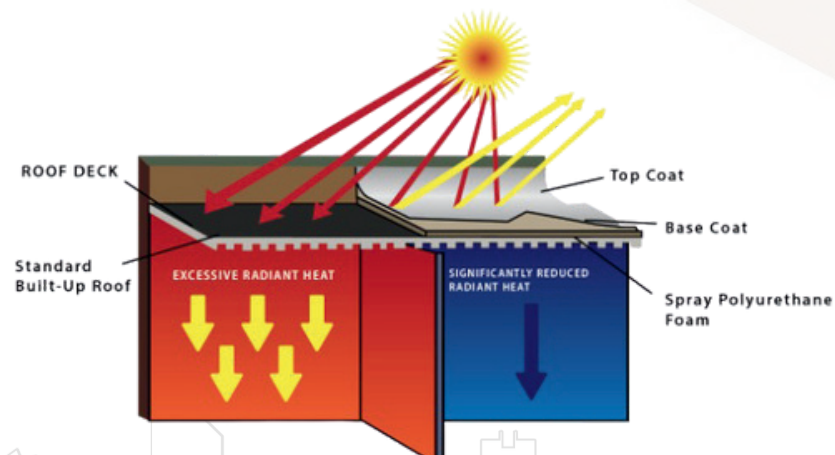
THE MULTIPLE HEAT AND **WATERPROOFING** SYSTEM

Polyurethane Foam is Effective:

Key Features & Benefits:

- Dual Protection – Provides superior resistance against both water leakage and extreme heat.
- Energy Efficient – Minimizes heat absorption, keeping interiors cooler and reducing energy costs.
- Long-Lasting Performance – Made with high-quality materials designed to withstand harsh weather conditions.
- Versatile Application – Ideal for all types of roofs and exterior surfaces.
- Prevents Air Infiltration – Creates an airtight barrier for improved insulation efficiency.
- High Insulation Value – Delivers excellent thermal resistance for maximum comfort.
- Spray-Applied System – Ensures even coverage with fast application and minimal disruption.
- Lightweight Solution – Adds minimal load to the structure while providing superior protection.
- Strong Adhesion – Bonds firmly to concrete, metal, and various substrates for lasting durability.

We value and protect our environment. A Polyurethane Foam Roof System reduces energy use and improves building efficiency. Every step toward lowering our carbon footprint helps create a better future for our children.



WHY CHOOSE G.R.I. FOR **COMBO** **WATERPROOFING ?**

- **Certified Combo System Experts:** Our team specializes in Combo Roof waterproofing with years of proven experience. We follow international standards to ensure superior performance and durability.
- **Highest-Quality Materials:** We use tested and approved waterproofing and insulation materials for long-lasting results. Each product is selected for UAE's harsh climate conditions.
- **Seamless Waterproofing & Insulation:** Our Combo system combines both thermal insulation and waterproofing in one application. This ensures full protection against leakage, heat, and structural damage.
- **Energy-Efficient Solutions :** Our system reduces heat transfer and lowers cooling costs significantly. Clients enjoy long-term savings and improved indoor comfort.
- **Strong Adhesion & Durability:** The system bonds firmly to the substrate for maximum stability. It withstands extreme weather, UV exposure, and heavy foot traffic.
- **Professional Application Process:** Our trained team applies each layer with precision and quality control. We ensure consistent thickness, proper curing, and flawless finishing.
- **25-Year Warranty Assurance:** Every Combo waterproofing system is backed by our trusted 25-year warranty. We stand behind our work with commitment, reliability, and full after-service support.

MEMBRANE WATERPROOFING SYSTEM

COMPLETE WATERPROOFING SOLUTION UAE

We provide all types of waterproofing membranes—including Bitumen (SBS & APP), PVC, HDPE, EPDM, and TPO—across Abu Dhabi, Dubai, Sharjah, and Al Ain. With a strong focus on quality, workmanship, and reliability, we specialize in deep basements, wet areas, and large-scale commercial and industrial projects. Our team applies over 1 million m² of bituminous membranes each year, delivering tailored solutions, durable protection, and guaranteed results.

SBS MODIFIED BITUMINOUS MEMBRANE



APP MODIFIED BITUMINOUS MEMBRANE



BRIDGE DECK WATERPROOFING MEMBRANES



Wet Area Torch-Applied Waterproofing Usage in Industries

Widely used in residential, commercial, and industrial construction, torch-applied waterproofing provides reliable protection for wet areas such as bathrooms, showers, swimming pools, balconies, and terraces. It is also ideal for factories, warehouses, and storage facilities where consistent water exposure can cause structural damage.

Benefits of Wet Area Torch-Applied Waterproofing:

- **Waterproofing:** Provides strong, effective waterproofing that prevents water intrusion and protects against long-term damage. **Durability:** Torch-on membranes are highly durable and built to last, even in demanding environments.
- **Versatility:** Suitable for a wide range of substrates and easily applied to complex shapes and details.
- **Low Maintenance:** Requires minimal upkeep, offering long-term reliability with reduced maintenance needs.
- **Cost-Effective:** An economical solution that delivers durable protection while reducing future repair costs.



CEMENTITIOUS WATERPROOFING CONTRACTOR

COMPLETE WATERPROOFING SOLUTION UAE

Wet Area Cementitious Waterproofing uses cement-based coatings to form a durable, water-resistant barrier in moisture-prone areas such as bathrooms, kitchens, balconies, and swimming pools. It effectively protects surfaces from water penetration, leakage, and long-term structural damage.

Wet Area Cementitious Waterproofing is Used In:

Bathrooms: Prevents water seepage on walls, floors, and shower areas.

Kitchens: Protects surfaces near sinks, countertops, and wet zones.

Swimming Pools: Seals pool tanks and surrounding structures against leakage.

Basements: Prevents groundwater penetration through floors and walls.

Balconies & Terraces: – Shields outdoor surfaces from rain, moisture, and cracks.



Benefits of Wet Area Cementitious Waterproofing

- **Reliable Water Barrier** – Prevents seepage and protects structural surfaces.
- **Durable Performance** – Withstands constant moisture exposure.
- **Wide Application** – Works effectively on many wet-area surfaces.
- **Hygienic Protection** – Reduces mold and mildew formation.
- **Low Maintenance** – Offers long-lasting protection with minimal upkeep.

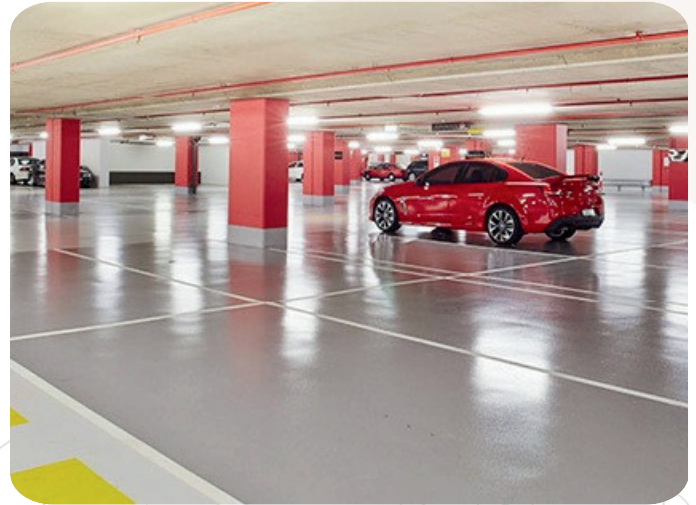
Epoxy Flooring solution

High-Quality, Durable, and Safe Flooring for Every Environment

Sky Seal Insulation is your trusted epoxy flooring contractor and coating specialist in Abu Dhabi, Dubai, and across the UAE. We deliver expert installation, premium materials, customized designs, and strict safety standards to ensure your flooring is durable, visually appealing, and built to last. Our commitment to quality and reliable warranties makes us the preferred choice for residential, commercial, and industrial epoxy flooring solutions.

Our Specialties

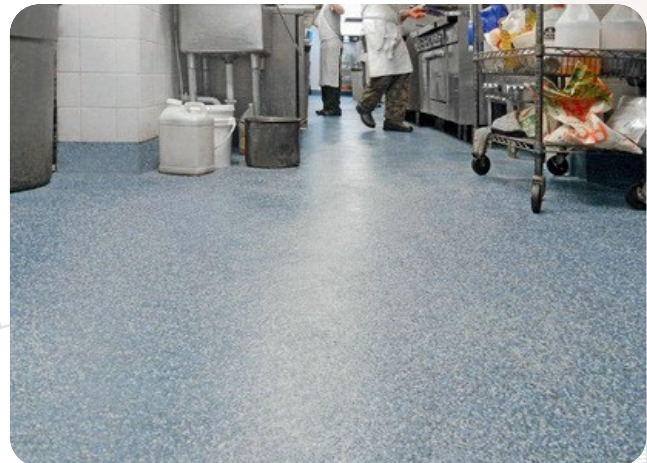
- **Floor Striping:** Durable, high-visibility markings designed for safety, traffic flow, and workplace organization.
- **Showrooms:** Decorative, glossy, seamless epoxy finishes that enhance appearance and impress customers.
- **Car Parking:** Long-lasting, chemical-resistant flooring systems built to withstand vehicle load and daily wear.



- **Healthcare Applications** – Hygienic, chemical-resistant epoxy surfaces designed for hospitals, clinics, laboratories, and clean-room environments.
- **Hospital Epoxy Flooring** – Seamless, easy-to-clean, and durable flooring systems that support strict medical hygiene standards.
- **Anti-Skid & Anti-Slip Safety** – Textured epoxy coatings engineered to prevent slips and improve safety in high-traffic and wet areas.



- **Industrial Epoxy Flooring:** Heavy-duty, impact-resistant flooring designed for factories, warehouses, and production facilities.
- **Anti-Static / Conductive Flooring:** Specialized epoxy systems that prevent static discharge in electronics, labs, and sensitive industrial environments.



GRP LINING WATER TANK WATERPROOFING

Sky Seal Insulation is your trusted specialist for GRP (Glass Reinforced Plastic) water tank lining and waterproofing across Abu Dhabi, Dubai, and the UAE. Our GRP solutions provide exceptional durability, corrosion resistance, and long-lasting protection for underground, overhead, and industrial tanks.

Safeguard your essential assets with our reliable, leak-proof GRP tank lining services.

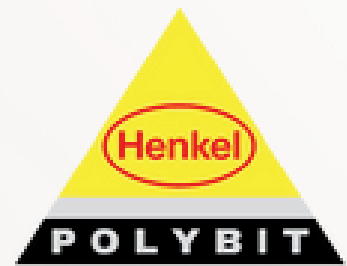


- **Water Storage Tanks** – Ensures clean, safe, and potable water by providing a hygienic, leak-proof lining.
- **Chemical Storage Tanks** – Offers strong resistance against chemical corrosion and aggressive substances.
- **Oil & Fuel Storage Tanks** – Prevents leakage, contamination, and deterioration caused by hydrocarbons.
- **Wastewater & Sewage Tanks** – Protects against seepage and stops groundwater contamination.
- **Industrial Process Tanks** – Resists chemical reactions and corrosion in industrial environments, ensuring long-term performance.

WATERPROOFING MATERIALS

We use premium-grade waterproofing materials from leading international brands to ensure maximum durability, superior performance, and long-term protection. Our solutions are trusted across all project types, including roofs, basements, water tanks, and wet areas.

Trusted Brands We Use:



Thank You

For Your Attention

Your success is our mission.



Get In Touch



Phone Number:

+971 56 945 7168



Email Address:

info@skysealinsulation.com



Website:

www.skysealinsulation.com



Location:

Abu Dhabi, Al-Ain, Dubai, Sharjah UAE